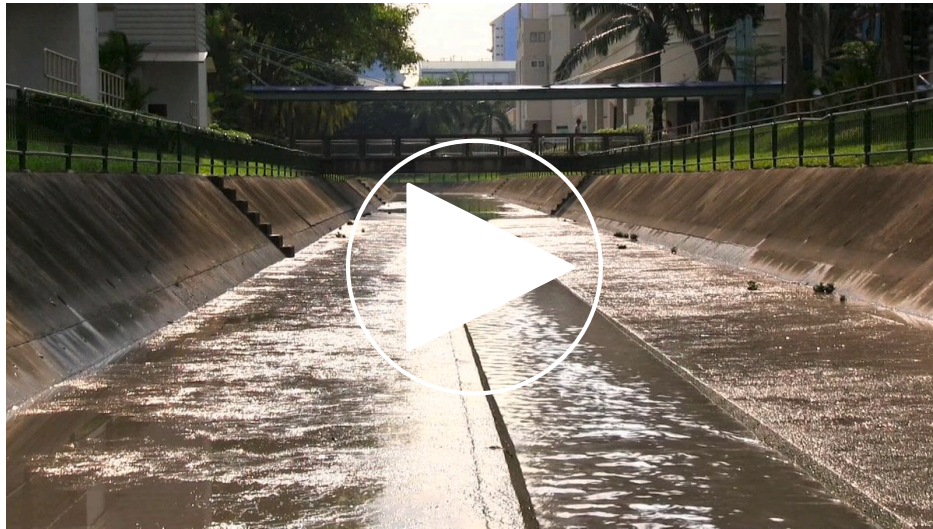


Water

# Images of Territory: Water

Pascal Deschenaux and Simon Zemp



<https://vimeo.com/76840416>

### DOWN THE DRAIN (02'45")

Singapore's water collection system covers the island's territory, from small gutters surrounding the blocks of HDB flats to channels bringing water through different neighbourhoods. Following raindrops through these infrastructures shows a complex landscape of water, where security and efficiency are more valued than urban interactions.



<https://vimeo.com/76840419>

### WATERTOWN (02'17")

A new part of the city is being built in the north of the Singapore island. Water is used here as an attraction for investors to build new condominiums around it. The film captures a moment when a water channel is already built and used for recreation whilst the surrounding city is still under construction.



<https://vimeo.com/76840417>

### REFLECTIONS (02'11")

Singapore's familiar urban scenes are shown reflected on water.

## See also



Elective

Images of Territory  
IMAGES OF TERRITORY (2/2)



Design Studio

HINTERLAND (2/2)  
Resources



SAND  
Images of Territory

This work by Pascal Deschenaux and Simon Zemp was created as part of the design studio Images of Territory (2/2) at ETH Zurich in Fall 2013. The PDF is intended for educational purposes only. Its commercial distribution is strictly forbidden.

© 2025, Architecture of Territory

Architecture of Territory  
Professor Milica Topalović

Prof. Milica Topalović  
ETH Zurich  
ONA G41  
Neunbrunnenstrasse 50  
8093 Zurich  
Switzerland  
+41 (0)44 633 86 88  
[www.topalovic.arch.ethz.ch](http://www.topalovic.arch.ethz.ch)